

Proposed Glen Eden BID Expansion in 2025

Since 2009 the Glen Eden Business Association has worked to improve business outcomes, with some significant successes. In 2016 the original BID area of Glenmall Place was expanded to include businesses on West Coast Road and Waikumete Road.

However, by 2020 it had become clear that the success of Glen Eden's business community was strongly connected to the success of businesses in the neighbouring commercial areas of West Coast Road and Waikaukau Road. The Glen Eden Business Association could see benefits from marketing the area as a whole and decided to explore the potential of an enlarged business association.

In 2023 the Glen Eden Business Association undertook a series of interviews and events to gauge the interest of local businesspeople about a combined business association. There was a high degree of support shown by those involved.

Our Proposal

The Glen Eden Business Association now proposes to expand its Business Improvement District (BID) boundary to include businesses and commercial properties in Waikaukau Road and West Coast Road. Subject to a ballot of businesses and property owners in the area in February / March next year, this enlarged BID would more effectively promote the interests of businesses in the Glen Eden area

Following the proposed expansion, our representation would cover approximately 200 businesses and 145 property owners, representing almost a quarter of a billion dollars in capital value commercial properties.

Businesses in the proposed expansion area have told us that increasing crime and safety concerns and issues such as traffic congestion and the impacts of the level crossings project are key concerns for them.

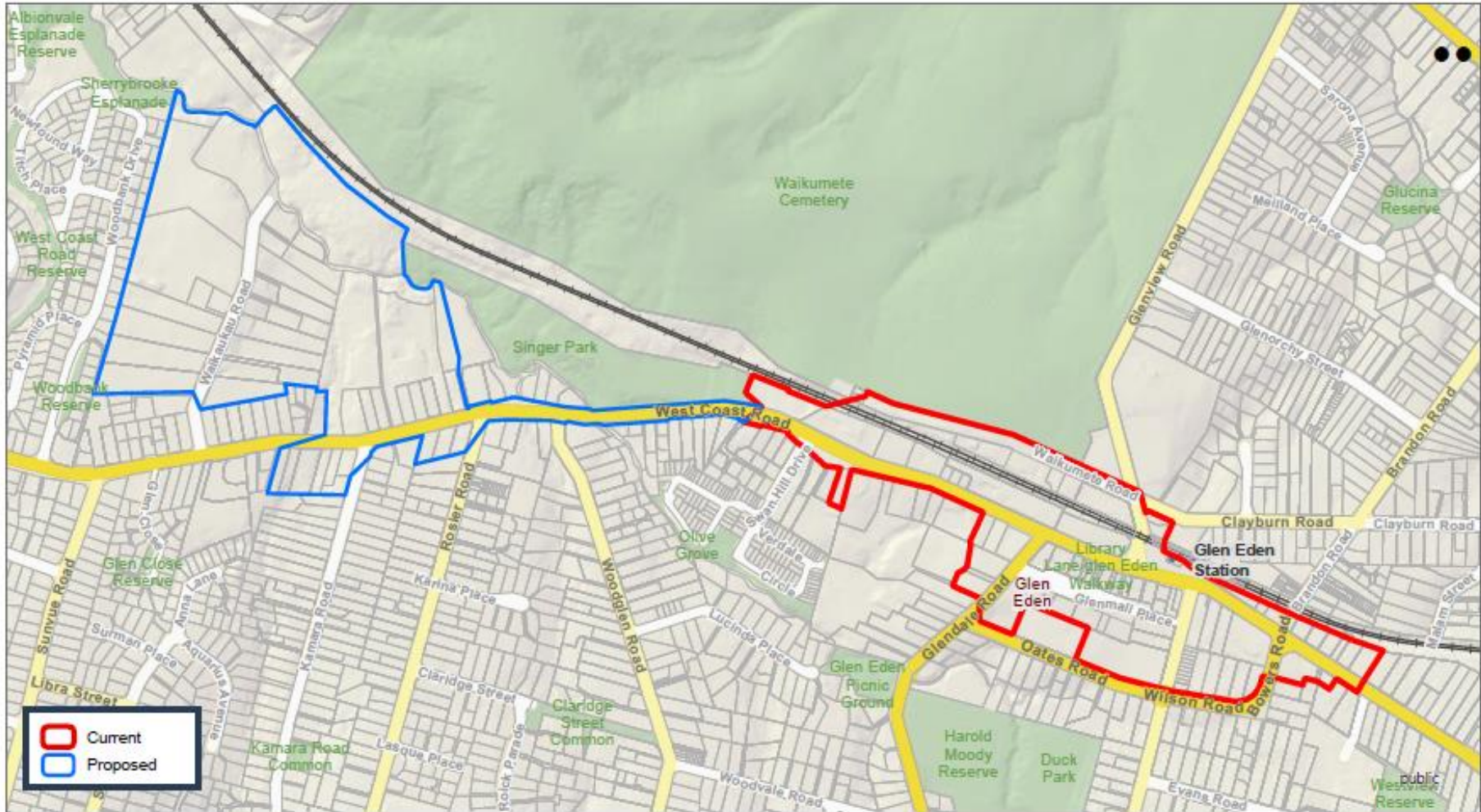
If we are successful in expanding the boundary of our BID, we would receive an additional \$56,450 of targeted rate funding from those businesses and there would be no need for any additional funding increases from existing BID ratepayers, in fact there would be a small decrease. Our total targeted rate income would increase to \$160,000.

We propose to spend most of this additional funding to add to our CCTV network by installing number plate recognition cameras along West Coast Road and to introduce night-time security patrols across the entire BID area to address concerns that all businesses have and providing benefits to all BID ratepayers.

We will be meeting face to face with all businesses and property owners in the proposed expansion area over the next couple of months to explain the process and the benefits of being part of our Business Improvement District.

Commercial properties and business located within the blue line on the map on the following page will have the opportunity to vote to be part of the Glen Eden Business Improvement District (BID) programme in late February 2024.

More details will be added to our website on the expansion shortly.



DISCLAIMER:
 This map/plan is illustrative only and all information should be independently verified on site before taking any action.
 Copyright Auckland Council. Land Parcel Boundary Information from LINZ (Crown Copyright Reserved). Whilst due care has been taken, Auckland Council gives no warranty as to the accuracy and plan completeness of any information on this map/plan and accepts no liability for any error, omission or use of the information. Height datum: Auckland 1946.

**Proposed draft Glen Eden
 Business District Improvement
 (BID) boundary Map**

0 50 100 150
 Meters
 Scale @ A4
 = 1:7,500
 Date Printed:
 5/08/2024

